

Environment Strategy Update

Full Council
16 September 2021



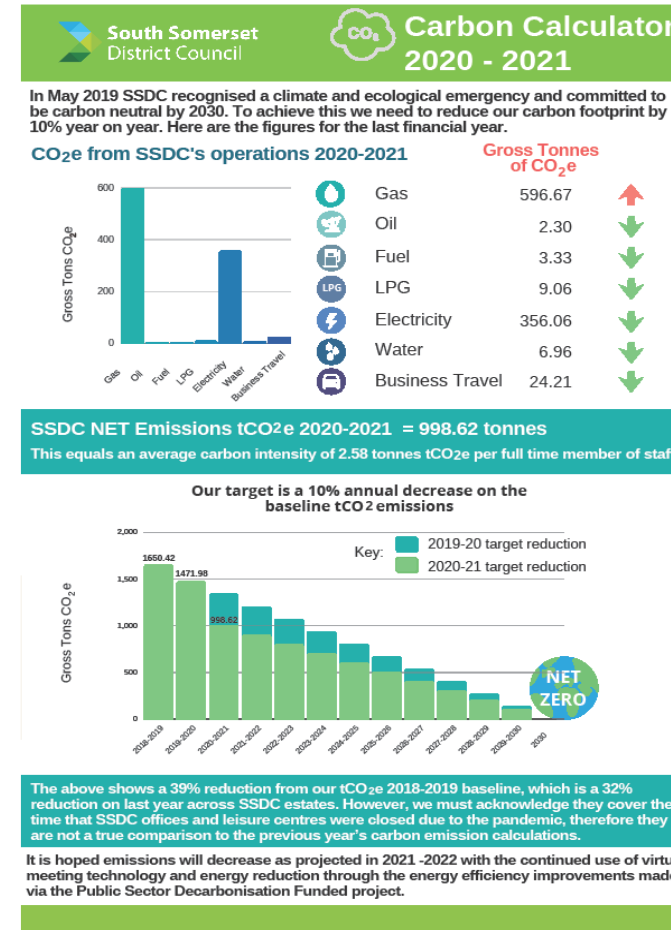
Carbon Calculator & REGO

Carbon Calculator

- 2018-19 (baseline year)
1650.42 tonnes CO₂e (4.68 tonnes CO₂e per FTE)
- 2019-20
1471.98 tonnes CO₂e (3.94 tonnes CO₂e per FTE)
A 10% reduction which put us on target.
- 2020-21
998.62 tonnes CO₂e (2.58 tonnes CO₂e per FTE)
A 39% reduction on the 2018-2019 base line figures and a reduction of 32% on last years emission figures

Renewable Energy

- Scrutiny task and finish group to look at energy supply
- REGO switch within existing contract
- Long term contract recommendations



Energy Grants Update

To help meet our own and community targets we are accessing grants being made available

Underway

- Local Authority Delivery Scheme (LAD) 1
£803k to improve hard to treat park homes
- Public Sector Decarbonisation Scheme (PSDS)
£3.9million for SSDC estate
Air source heat pumps, upgrading electrical heating systems, Solar PV, LED lighting and some insulation
- LAD 2
Delivery through SW Energy Hub
£1.2 million for energy improvements across South Somerset

In the pipeline

- Sustainable Warmth
- Social Housing Decarbonisation Fund (PSDF)



Green Transport

- We are continuing to work with the Devon Low carbon Energy and Transport Technology Innovator (DELETTI) EV charging project to deliver the 27 proposed charging sites for electric vehicles across our district.
- DfT e-scooter trial continues and being extended in Yeovil.
22,000 rides over a distance of more than 78,000kms with an average ride of 3.51 km
- Electric car sharing scheme.
Online survey to gauge public interest
Survey closed 30 April with 167 responses.
County wide e-bike feasibility study



Survey launched to establish interest in a community led electric car club for Sou... See more



8 5 comments 28 shares

Like Comment Share

Electric transport hire public survey shows potential for future scheme

28 June 2021 | District

South Somerset District Council is committed to be carbon neutral by 2030, and during the last financial year, the council delivered over 40 green projects which included the roll out of three Rapid Chargers in three of the SSDC car parks closest to the A303 and the roll out of the DfT e-scooter trials in Yeovil, Crewkerne and Chard. To complement these projects, a survey was undertaken to find out the potential for an electric car and bike sharing scheme.

Carbon Literacy and Business Survey

- **Carbon Literacy Training**

‘An awareness of the carbon costs and impacts of everyday activities and the ability and motivation to reduce emissions, on an individual, community and organisational basis.’

Roll out training to all staff

- **Business survey**

A critical sector in addressing climate change for South Somerset.

Survey opening 24th Sept to find out what our businesses are doing so we can help target advice and support



Carbon Literacy Project



No Mow and Parish Wildflower Giveaway

- 15 sites participated in **No Mow trials** this summer. Ilminster x6, Castle Cary and Ansford x4, Cucklington x1 and Milborne Port x4
- **Parish Wildflower Giveaway** will build on success of trials and support creation of new pollinator corridors



YEovil RECREATION CENTRE

SUSTAINABLE LAND MANAGEMENT CASE STUDY

Yeovil Recreation Centre (YRC) has been transformed into an environmental haven, by using a mix of sustainable land management styles to encourage wildlife to flourish within its formal sports environment.

The YRC provides high-quality facilities for football, hockey, athletics and a variety of other sports, and is managed by an on-site grounds team.

As part of its land re-management programme, South Somerset District Council (SSDC) hope to demonstrate that recreational and sporting facilities can go hand in hand with nature conservation and environmental sustainability, as well as showing that with the right design, even small areas of green space can provide great benefits.

This is one of many initiatives implemented by SSDC as part of its overarching Environment Strategy.

Key highlights

- 2,500 trees have been planted across the YRC site in a mix of arrangements, including individual trees, areas of copse planting, as well as linear hedgerow planting between the sports pitches.
- Implementation of a range of land management styles, including areas of wildflower planting on marginal banks around the site and 'No Mow' areas on amenity grass, using a reduced cutting regime to encourage wildflowers.
- Creation of a 'bug hotel' located within the golf course.
- The use of natural seaweed liquid fertilisers instead of conventional chemical fertilisers.

South Somerset District Council

Committed to be carbon neutral by 2030



SSDC leaves space to go wild

SSDC are implementing No Mow Trials, by letting the flowers bloom and species prosper across certain SSDC-owned spaces, ensuring the areas provide a vital source of sustenance for our pollinators and new habitat for all species.



Trees, Woodlands & Open spaces Strategy

- **TreeScapes** – as part of the County Council application for across Somerset
- **Yeovil Rotary Centenary Woodland** – an edible woodland
- **Ham Hill woodland extension and linkages** – subject to funding 5.82Ha of land to be planted with 6,500 trees to link existing semi natural woodland islands
- **Opens Spaces Strategy** awaiting data from current play space provision audit to inform standards and draft to be available from early next year.
 - Resident consultation, to inform the plan, be launched in coming weeks



Communications

- **Website – www.southsomersetenvironment.co.uk**

NEW! South Somerset Environment website is now live.

Soft launch in August Get SuSSed. 95 Unique visitors as at 7.9.21

Next step is to promote the website on social media and SSDC internal comms throughout the week. So we expect these numbers to shoot up!

- **Get SuSSed Newsletter**

Continues to evolve and increase reach and feedback remains

Sent to 674 recipients

Popular features include Yeovil Recreation Centre sustainable land management, Volunteering



In the news

We're delivering environmental messages regularly, seasonally and thematic basis, via social media, Get SuSSed, Environment website and Press. Those below have sparked requests for radio interviews with BBC Radio Somerset and Greatest Hits Radio and most recently BBC Points West TV covered the Why litter bins are not always the answer (Ham Hill) story.



SSDC leaves space to go wild

SSDC are implementing No Mow Trials, by letting the flowers bloom and species prosper across certain SSDC-owned spaces, ensuring the areas provide a vital source of sustenance for our pollinators and new habitat for all species.



Chard and Ilminster News

Success for e-scooter trial in Chard and Crewkerne | Chard

...

THE e-scooter rental in Chard and Crewkerne has proved very popular since it launched last month. South Somerset District Council (SSDC), ...



SSDC grant helps reintroduce Watervoles

South Somerset District Council has awarded Ferne Animal Sanctuary a community grant of £950 as part of a £2,950 project to reintroduce water voles to the sanctuary.

Parish Champions and Parish Packs

- Engaging with the network of Environment Champions (68 and growing)
- Zoom networking events - Recycle More with Somerset Waste Partnership and wildflower seminar on 29th September.
- We recognise there are still gaps in our parish Environment network and are creating a map of where Parish Environment Champions are located to identify areas for recruitment.
- Developing a new Parish advice pack to help parishes manage their land effectively
- New Schools Pack almost complete; gathering local case studies and then launch in November to mark COP26



Countryside Events

- Busy summer of events at natural greenspaces – 30 events with 1900 participants.
- Event every other day through holidays – upwards of 150 attendees at drop in events
- Gathering all data and feedback to inform future event and recovery planning

Events This week



August 10th STONE CARVING 10am until 3pm (drop-in, FREE EVENT)

August 11th JUNIOR BAT WALK - 'BARMY BATS' 7.30pm - 9.30pm (£2 - bookable via website)

August 12th FAMILY WILDLIFE WALK 10am until 12pm (£2 - bookable via website)



Environment Strategy Review

South Somerset Environment Strategy



October 2019

Our Vision for South Somerset:

'we wish to be a leading Council in developing and adopting a Green Agenda to promote sustainable environment, economy and communities'

South Somerset Council Plan 2019/20

